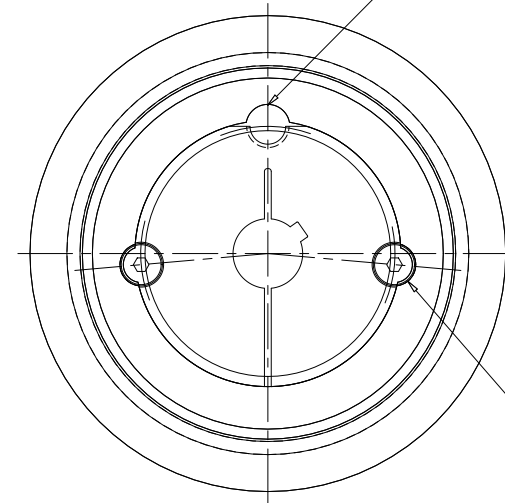
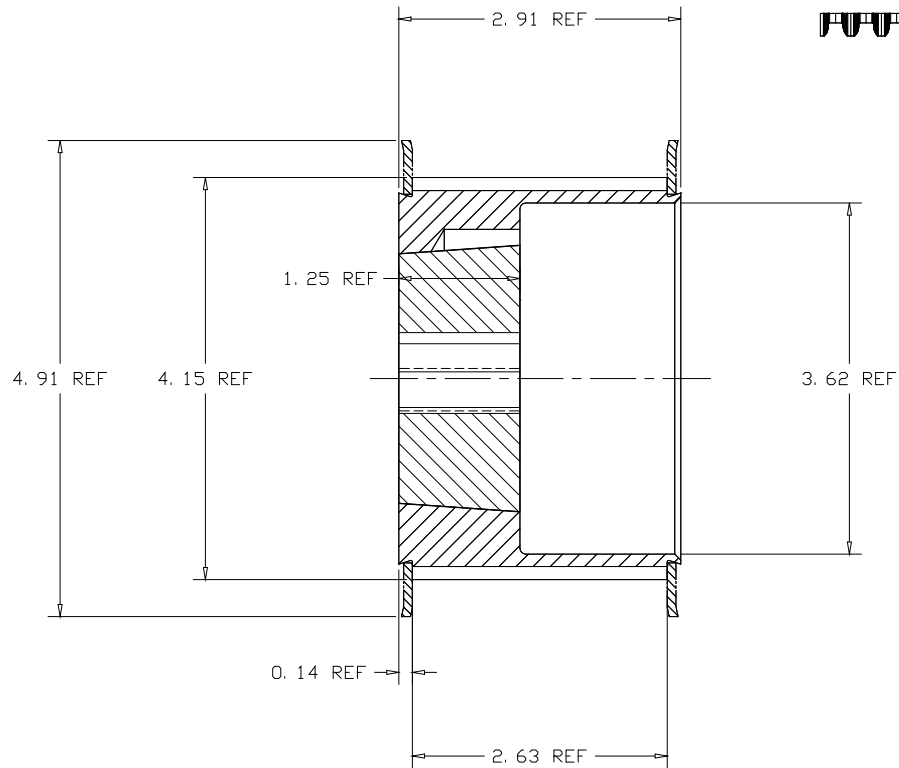


GATES 8M POLY CHAIN GT2 BELT



FOR BUSHING
REMOVAL

INSTALLATION
SET SCREWS

CERTIFIED

DFTR	REV	DATE	APP'D	REVISION

TOOTH TYPE: GT
BELT PITCH: 8m

PITCH DIA: 4.211
NO. OF TEETH: 42
MATERIAL: DUCTILE IRON
FINISH: 250 ✓
COATINGS: ANTI-RUST

THE MATERIALS AND INFORMATION, INCLUDING THE PRINCIPALS OF DESIGN PRESENTED, ARE THE EXCLUSIVE PROPERTY OF THE GATES RUBBER COMPANY AND ARE TO BE CONSIDERED AS CONFIDENTIAL INFORMATION. ACCORDINGLY, THIS INFORMATION IS SUBMITTED TO YOU WITH THE AGREEMENT THAT IT IS NOT TO BE REPRODUCED, COPIED, OR LOANED, IN PART OR IN WHOLE, NOR IS THE INFORMATION TO BE RELAYED TO ANY OTHER INDIVIDUAL OR COMPANY. ACCEPTANCE OF THIS DRAWING WILL BE CONSTRUED AS AN AGREEMENT TO THE ABOVE

THIS DRAWING IS A STOCK POWER TRANSMISSION COMPONENT. DETAILS SHOWN WHICH DO NOT AFFECT DRIVE FUNCTION MAY BE CHANGED WITHOUT ANY NOTIFICATION.

CUSTOMER NAME:
CUSTOMER DWG NO.:



THE GATES RUBBER CO.
DENVER, COLORADO

PART DESCRIPTION: 8MX-42S-62 2012
GATES PART NUMBER: 77186042

APPROVED BY _____
DATE _____

REF. QUOTE NO.

DR. BY _____ DATE _____
CK. BY _____
APPD. BY _____

DRAWING NO.

77186042